

Early Career Astronomers & Their Supporters

PROGRAM -SS31-



9.00-10.30

Well-being & How to get most out of your PhD/PostDoc

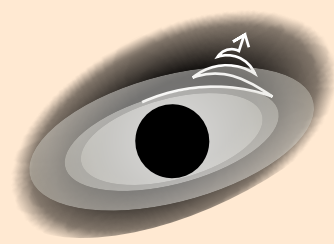
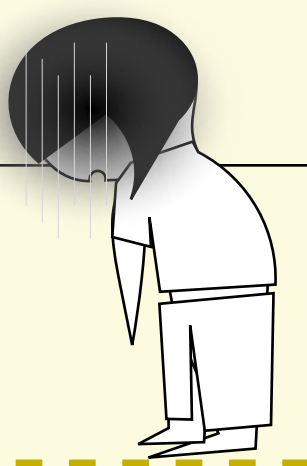
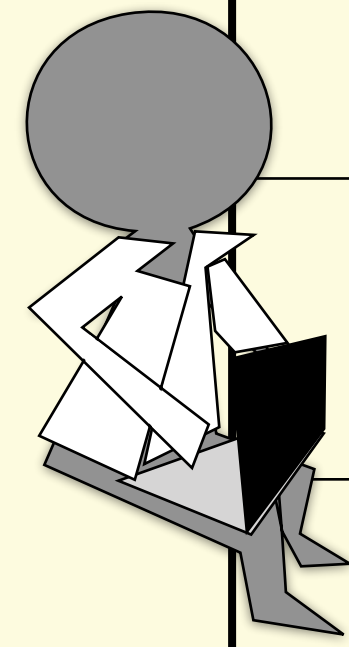
9.00: Hannah Calcutt: *Mental health and wellbeing in astronomy*

9.20: Gourav Khullar: *Equity and Inclusion Advocacy and Community Organizing with Early Career Researcher Groups*

9.40: Tanveer Karim: *Model minority myth and its impact on policy making: a case study on asian-americans*

10:00 Discussion and Q&A with all speakers

10:30 Coffee Break



11.15-12.45

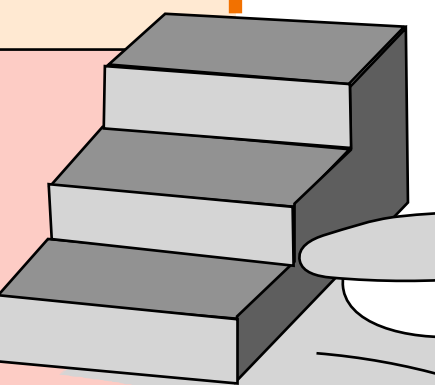
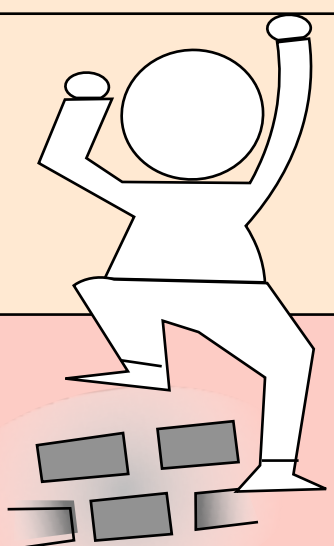
What does a supportive and fostering academic env look like?

11.15: Viviana Acquaviva: *The benefits of a support network*

11.45: Small group discussions

12.15: Claudia Gutierrez: *RECA mentorship programme: connecting and empowering the astronomical community in Colombia*

12.40: Start of match-ups between mentors and mentees



Mentor sign up here:
<https://tinyurl.com/EAS22mentoring>

13.15-14.45

Lunch

Mentoring session: Pre-organised meetups between mentors and mentees

Academic careers and independent research projects

17.30: Anna McLeod: *astronomical careers*

17.50: Mark Gieles: *A career in astronomy: a balancing act*

18.10: Brenda Namumba: *Bridging Africa and inspiring the future through science: my story*

18.25: Cormac Larkin: *(Ph)DIY: A beginner's guide to designing a PhD*

18.40: Discussion and Q&A with all speakers

Social event by EAS

20.30-22.00

Student event at The Akwarela Playa (pre-registration required)

eas

